

C-STRIP-A-LIN Series

2' & 4' LED Linear Strip Narrow
Replaces 1-Lamp T8 17W/2-Lamp T8 32W



BIG ENERGY SAVINGS MADE EASY IN A SLEEK DESIGN!

Replace 1-lamp T8 17 Watt or 2-lamp T8 32 Watt fluorescent lamps with a sleek and slender linear. This sleek-looking fixture features smooth, even light, and saves you money with easy installation, quality construction and exceptional energy efficiency.



PRODUCT SPECIFICATIONS

OVERVIEW

- Initial Delivered Lumens: 1200 - 4900
- CRI: ≥ 80
- CCT: Soft White 3000K, Warm White 3500K, Neutral White 4000K, Cool White 5000K
- Mounting: Surface mounting & Junction box
- Input Power: 10-38 Watts
- Dimmable: Yes, 0-10V to 10%
- Operating Range: C-STRIP-A-LIN2: -4°F to 104°F (-20°C to 40°C)
C-STRIP-A-LIN4: -40°F to 104°F (-40°C to 40°C)
- Lifespan: Estimated 50,000 Hours
- Power Factor: > 0.9
- Total Harmonic Distortion: $< 20\%$
- Limited Warranty: 5 Year*
- Replaces 1-Lamp T8 17W/2-Lamp T8 32W

DURABLE	EFFICIENT	RECOMMENDED USE	INPUT VOLTAGE
<ul style="list-style-type: none"> Made with High Quality Steel with high reflectance paint, providing high lumen output 	<ul style="list-style-type: none"> High efficiency fixture with 113-132 lumens per watt Fully tested and backed by Cree Lighting 	<ul style="list-style-type: none"> Industrial Commercial Maintenance Areas & Warehouses General Illumination 	<ul style="list-style-type: none"> Universal (120V through 277V Operation)

ORDERING INFORMATION

Example: C-STRIP-A-LIN2-12L-30K-WH

C-STRIP	A					WH	
PRODUCT	SERIES	STYLE	LUMEN PACKAGE*		CCT*	COLOR	
C-STRIP	A	LIN2 2' LED Linear Strip Narrow	C-STRIP-A-LIN2-12L 1,200 Lumens, 10W - 30K, 35K, & 40K Only	C-STRIP-A-LIN2-13L 1,300 Lumens, 10W - 50K Only	30K Soft White (3000K) - 12L, 22L & 43L Only 35K Warm White (3500K) - 12L, 23L & 44L Only	40K Neutral White (4000K) - 12L, 23L & 46L Only 50K Cool White (5000K) - 13L, 25L & 49L Only	WH White
		LIN4 4' LED Linear Strip Narrow	C-STRIP-A-LIN4-22L 2,200 Lumens, 30K, 19W C-STRIP-A-LIN4-23L 2,300 Lumens, 35K, 19W C-STRIP-A-LIN4-25L 2,500 Lumens, 50K, 19W	C-STRIP-A-LIN4-43L 4,300 Lumens, 30K, 38W C-STRIP-A-LIN4-44L 4,400 Lumens, 35K, 38W C-STRIP-A-LIN4-46L 4,600 Lumens, 40K, 38W C-STRIP-A-LIN4-49L 4,900 Lumens, 50K, 38W			

* Refer to page 3 for list of available Lumen Packages and CCT's

© 2020 Cree Lighting, A company of IDEAL INDUSTRIES. All rights reserved. For informational purposes only. Content is subject to change. Patent www.creelighting.com/patents. C-LITE® and the C-LITE logo are registered trademarks of Cree Lighting. The UL logo is a registered trademark of UL LLC. The DLC Premium QPL logo is a registered trademark of Efficiency Forward, Inc.

US: creelighting.com, e-conolight.com

Distribution/Sales: 855-617-2733 Customer Services: 888-243-9445

Rev. Date: V1.02/24/2020

For informational purposes only. Content is subject to change. *See lighting.cree.com/warranty for details

CERTIFICATIONS

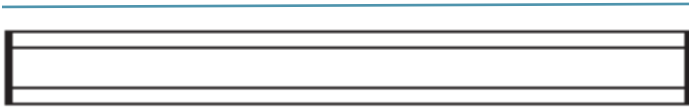


*C-STRIP-A-LIN2-13L-50K-WH & C-STRIP-A-LIN4-25L-50K-WH only.

C-STRIP-A-LIN Series

2' Strip

24.3" L
(617mm)

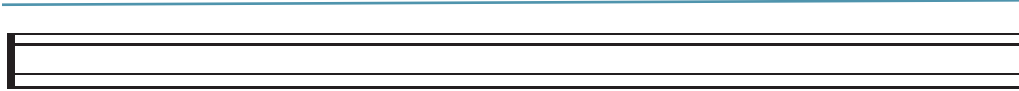


2.67" H
(68mm)

2.56" W
(65mm)

4' Strip

47.8" L
(1214mm)



2.67" H
(68mm)

2.56" W
(65mm)

SERIES OVERVIEW

DIMENSIONS	PRODUCT WEIGHT	MOUNTING HEIGHT	SPACING
2' • 24.3" (617mm) L x 2.56" (65mm) W x 2.67" (68mm) H	3.34 lbs.	10 to 15 feet	1-3 times the mounting height
4' • 47.8" (1214mm) L x 2.56" (65mm) W x 2.67" (68mm) H	6.01 lbs.		

FIXTURE SPECIFICATIONS

HOUSING	High reflectance steel housing
LENS ASSEMBLY	Uniform illumination via diffused polycarbonate lens Note: Polycarbonate lenses not intended for use in environments where any concentrations of industrial cutting fluids are used.
MOUNTING	Surface mount or Octagonal Junction box

ELECTRICAL PERFORMANCE

OPERATING RANGE	LIFESPAN L ₇₀ AT 25°C (77°F)	POWER FACTOR	TOTAL HARMONIC DISTORTION	DIMMABLE
C-STRIP-A-LIN2: -4°F to 104°F (-20°C to 40°C)	Estimated 50,000 Hours	> 0.9	< 20%	Yes, 0-10V to 10%
C-STRIP-A-LIN4: -40°F to 104°F (-40°C to 40°C)				

 **CA RESIDENTS WARNING:** Cancer and Reproductive Harm - www.p65warnings.ca.gov

© 2020 Cree Lighting, A company of IDEAL INDUSTRIES. All rights reserved. For informational purposes only. Content is subject to change. Patent www.creelighting.com/patents. C-LITE® and the C-LITE logo are registered trademarks of Cree Lighting. The UL logo is a registered trademark of UL LLC. The DLC Premium QPL logo is a registered trademark of Efficiency Forward, Inc.

US: creelighting.com, e-conolight.com Distribution/Sales: 855-617-2733 Customer Services: 888-243-9445

Rev. Date: V1 02/24/2020

For informational purposes only. Content is subject to change. *See lighting.cree.com/warranty for details

C-LITE
LED LIGHTING




C-STRIP-A-LIN Series

LUMEN PACKAGE	SYSTEM WATTS	TOTAL CURRENT (A)			
	120-277V	120V	208V	240V	277V
C-STRIP-A-LIN2-12L-30K-WH C-STRIP-A-LIN2-12L-35K-WH C-STRIP-A-LIN2-12L-40K-WH C-STRIP-A-LIN2-13L-50K-WH	10	0.08	0.05	0.04	0.04
C-STRIP-A-LIN4-22L-30K-WH C-STRIP-A-LIN4-23L-35K-WH C-STRIP-A-LIN4-23L-40K-WH C-STRIP-A-LIN4-25L-50K-WH	19	0.16	0.09	0.08	0.07
C-STRIP-A-LIN4-43L-30K-WH C-STRIP-A-LIN4-44L-35K-WH C-STRIP-A-LIN4-46L-40K-WH C-STRIP-A-LIN4-49L-50K-WH	38	0.32	0.18	0.16	0.14

WARRANTY AND CERTIFICATIONS

WARRANTY	UL LISTED	DLC
5 Year Limited*	Damp Location Listed (for indoor use only)	DLC and DLC Premium Qualified. Please refer to www.designlights.org/QPL for most current information

ACCESSORIES

	4" OCTAGONAL JUNCTION BOX COVER SKU: C-ACC-A-JBXCVR USE: For use when surface mounting only - Nickel plated steel, not painted
	SUSPENDED MOUNT KIT V HOOK WITH 2.5' CHAIN SKU: C-ACC-A-SPMTKT USE: For use when suspended mounting only - Set of 2, Nickel Plated Steel
	PIR MOTION SENSOR On/Off functionality (no dim setting) SKU: C-PHB-A-HBPIR

© 2020 Cree Lighting, A company of IDEAL INDUSTRIES. All rights reserved. For informational purposes only. Content is subject to change. Patent www.creelighting.com/patents. C-LITE® and the C-LITE logo are registered trademarks of Cree Lighting, A company of IDEAL INDUSTRIES. The UL logo is a registered trademark of UL LLC.

US: creelighting.com, e-conolight.com

Distribution/Sales: 855-617-2733 Customer Services: 888-243-9445

Rev. Date: V1 02/24/2020

For informational purposes only. Content is subject to change. *See lighting.cree.com/warranty for details

C-LITE
LED LIGHTING