

# Noctura Series

LED Wall Mount Luminaire



## PERFORMANCE, QUALITY, STYLE. PICK ANY THREE.

### It All Goes Together—Seamlessly.

Whether you need luminaires to provide nighttime visibility in parking lots, illuminate buildings, highlight architectural accents, or general lighting, the Noctura Series has it all. And each luminaire—area, flood, and wall mount—feature the same design profile, resulting in a cohesive look. Sleek design lines and identical finishes ensure a consistent and pleasing dayform appearance throughout your entire campus or site. Lighting never looked so good—or so together.

### Meeting Our Demanding Standards—and Yours.

When it comes to testing our products, we don't hold back. Ever. In that spirit, the Noctura Series was put through the wringer—subjected to a battery of tests focusing on optics, mechanics, electronics, reliability and compliance. We didn't hold back. And they didn't disappoint. **The result?** You get luminaires you can count on for performance and durability.

### Wall-to-Wall Performance and Convenience

With Noctura™ Wall Mount luminaires, quality performance is one of many things you can count on. You can also expect installation that's made simple with integrated bubble level; retaining hardware designed to stay in the luminaire; hinged door or aircraft cables for hands-free wiring; and the convenience of top, bottom (large), sides or rear mounting orientations. And, with multiple lumen packages, you can also expect to find the wall mount luminaire that's the right fit. There's a lot you can count on with Noctura™ Wall Mount luminaires.

**CREE**  **LIGHTING**

## NOCTURA: THE PERFECT FIT.

A lighting solution that delivers performance and aesthetics. A family of luminaires that surpassed every test of every component—from its finish to its optics. Simple installation and low maintenance. A five-year warranty. This is the Noctura Series. And it's built to fit any lighting need you have anywhere it might be.

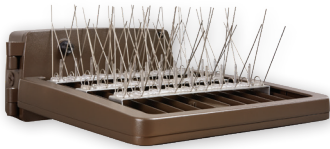
### PERFORMANCE SUMMARY

<b>Initial Delivered Lumens:</b> Up to 22,600 lumens
<b>Efficacy:</b> Minimum 70 CRI
<b>CRI:</b> Minimum 70 CRI
<b>CCT:</b> 3000K*, 4000K, 5000K, 5700K*
<b>Limited Warranty†:</b> 5 years on luminaire and finish

\* Limited availability, consult factory

† For complete details on the Cree 5-year limited warranty go to [creelighting.com/warranty](http://creelighting.com/warranty). Product specifications subject to change at any time. Visit [creelighting.com](http://creelighting.com) to find the most up-to-date information.

### ACCESSORY



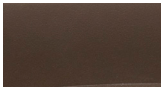
#### Coming Soon! Bird Spikes

Designed to prevent birds from landing or setting up a nest on the luminaire.

NTW-BRDSPK-11L  
NTW-BRDSPK-17L  
NTW-BRDSPK-23L

### FINISHES

Bronze (BZ)



### APPLICATIONS



#### Corporate Campus

Put your brand on display and invite customers and/or employees inside by creating a safe, comfortable, and visually appealing environment.



#### Education

Walking along building facades with the ability to see fosters a sense of well-being and confidence. The Noctura™ LED Wall Mount creates a significant resource for safety and security for school grounds and campuses.

### TRADITIONAL LIGHTING REPLACEMENTS

HID Lamps	Noctura Series
50W MH	1L
100W PSMH	3L
150W PSMH	7L
250W PSMH	11L
400W MH	17L
400W PSMH	23L

## LUMEN PACKAGES



1L



3L



7L



11L



17L



23L

Visit [creelighting.com](http://creelighting.com) or contact a Cree Lighting representative to learn more

[info@creelighting.com](mailto:info@creelighting.com) | 800.236.6800

© 2019 Cree Lighting, A company of IDEAL Industries. All rights reserved. For informational purposes only. Not a warranty or specification. See [creelighting.com](http://creelighting.com) for specifications. Cree®, and the Cree logo are registered trademarks of Cree, Inc. Noctura™ is a trademark of Cree Lighting, A company of IDEAL INDUSTRIES. The UL logo is a registered trademark of UL LLC.

CAT/SSHT-C127 Rev. Date: 06/05/19



**CREE** LIGHTING

A COMPANY OF IDEAL INDUSTRIES, INC.